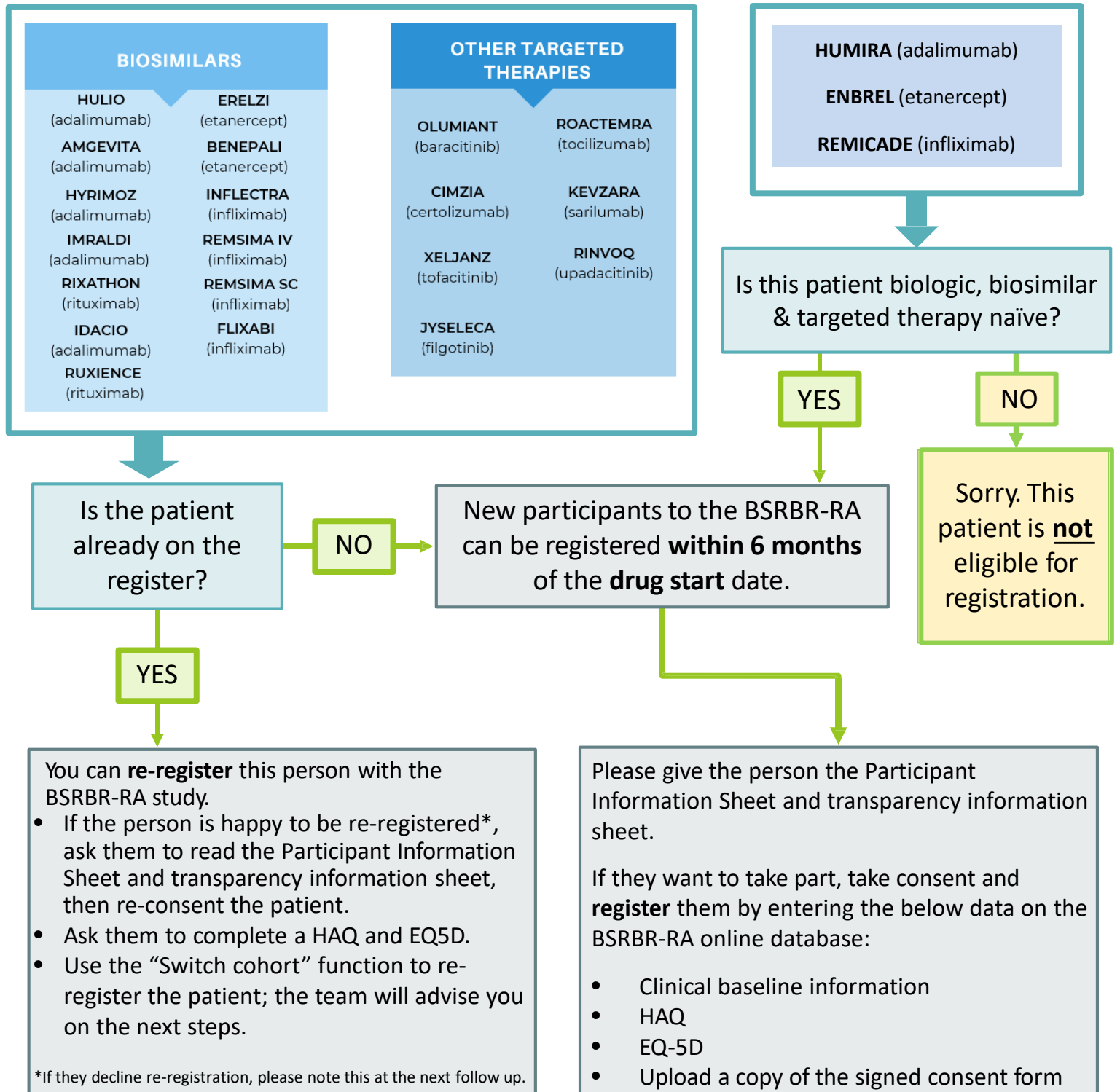


# Is your patient with Rheumatoid Arthritis starting treatment with any of the following therapies for the first time?



If you will not be seeing the participant in clinic within the six month recruitment window, there is an **‘outreach consent’** option for obtaining consent remotely. Please see the information here: <https://bsrbr.org/hospitals/eligibility/consent-process/>

- Database Access: <https://bsrbr.org/database/>
- Registration Forms: <https://bsrbr.org/hospitals/data-collection/>